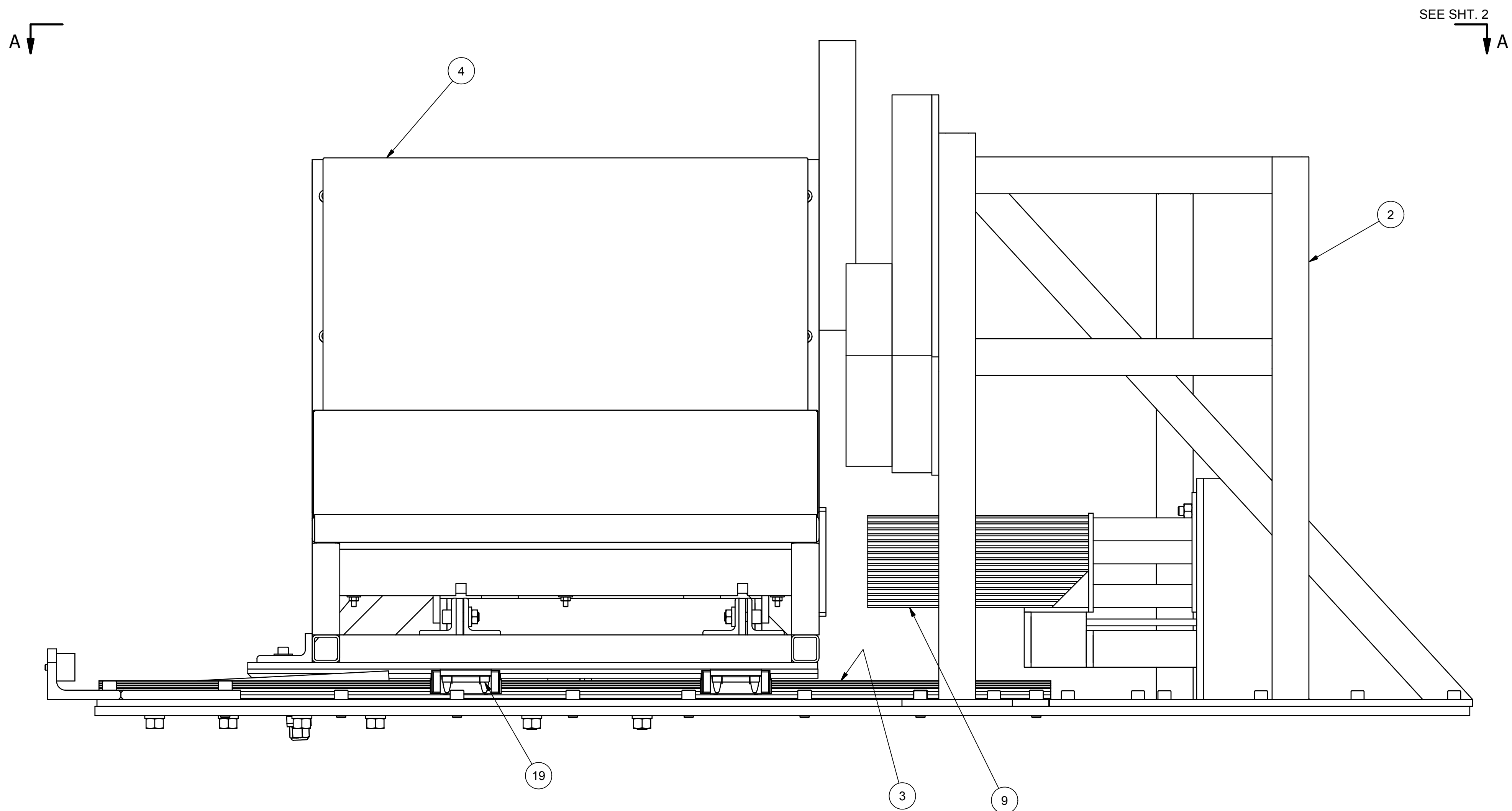
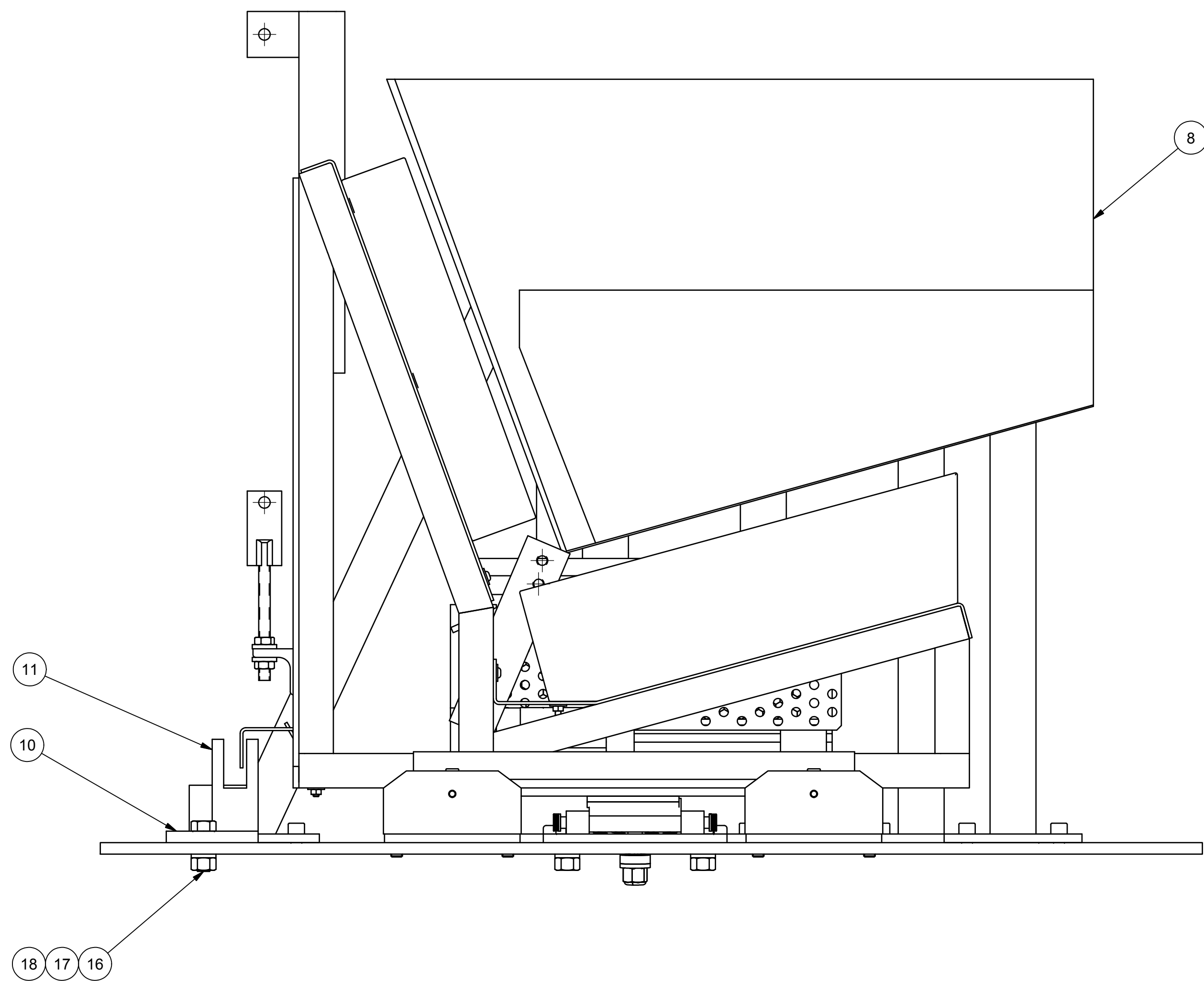
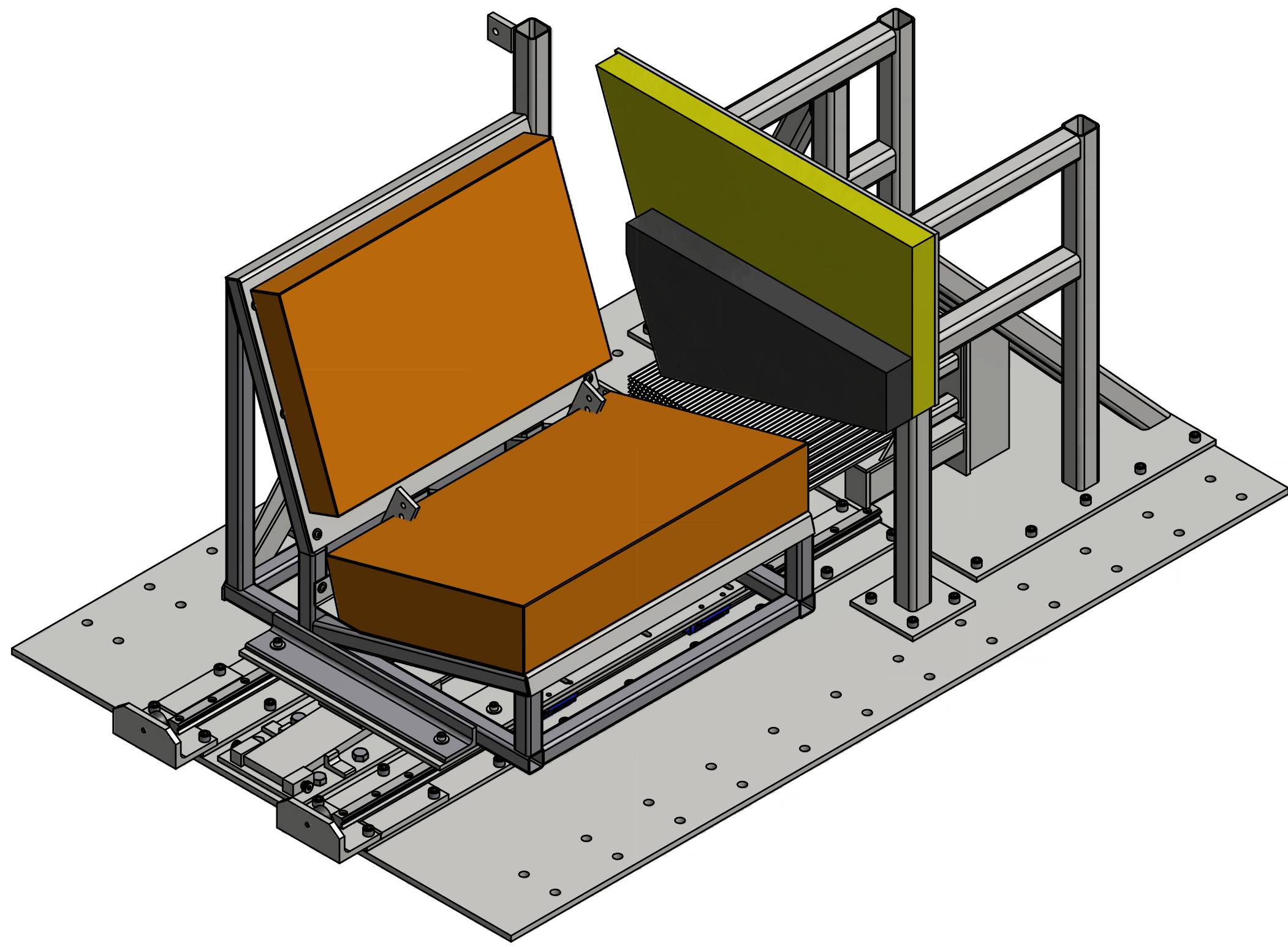


ZONE		REVISION HISTORY		DATE	BY
REV		DESCRIPTION			
A		REPLACED GEAR RATCHET SYSTEM WITH RACK RATCHET SYSTEM & ADDED SHT. 2		4/16/2012	DW
B		REPLACED RACK RATCHET SYSTEM WITH ANTI-REBOUND SYSTEM		12/18/2012	DW
C		DRAWING NUMBER WAS 2921-000		10/29/2013	DW



21	6	9000496V	SCREW, SHCS 1/2-13 x 1 1/4"
20	22	5000440V	SCREW, SHCS M12-1.75 x 20
19	16	5000372	SCREW, SHCS M8-1.25 x 30
18	10	9001385V	NUT, HEX 5/8-11
17	10	9000122V	WASHER, SPRING LOCK 5/8"
16	2	9000607V	BOLT, HEX HD 5/8-11 x 1 3/4"
15	8	9000606V	BOLT, HEX HD 5/8-11 x 1 1/2"
13	30	9000495V	SCREW, SHCS 1/2-13 x 1"
12	1	9000749V	SCREW, SHCS 3/8-24 x 1/2
11	1	3000220V	LIGHT TRAP SENSOR
10	1	2921-700	LIGHT TRAP MOUNT ASSEMBLY
9	1	2921-600	HONEYCOMB
8	1	2921-500	IMPACTOR DOOR FOAM ASS'Y.
7	1	2921-420	RIGHT SIDE BUMPER ASSEMBLY
6	1	2921-410	LEFT SIDE BUMPER ASSEMBLY
5	1	2921-400	ANTI-REBOUND FIXTURE ASS'Y.
4	1	2921-300	BENCH ASSEMBLY
3	2	2921-250	LINEAR RAIL ASS'Y.
2	1	2921-200	IMPACTOR FRAME & STOP ASS'Y.
1	1	2921-100	BASE PLATE

[illegible]